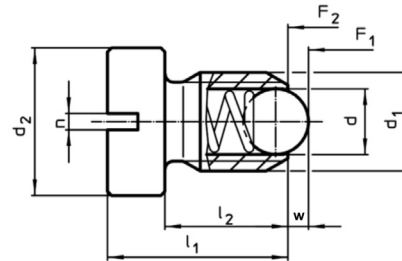


Größen M04 + M05



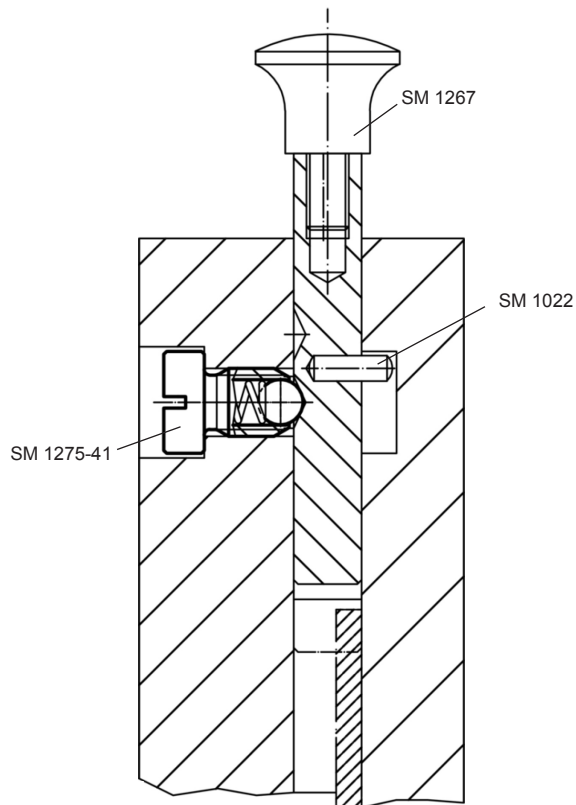
Größen M06 bis/to M12

	Catalog No.	d₁	Material
	SM 1275-41	M04	ST

- ST:** Hülse: Automatenstahl, brüniert
Kugel: Kugellagerstahl, gehärtet
Feder: rostfreier Stahl
- NI:** Hülse: rostfreier Stahl 1.4305
Kugel: rostfreier Stahl, gehärtet
Feder: rostfreier Stahl
- ST:** housing: free cutting steel, blackened
ball: ball-bearing steel, hardened
spring: stainless steel
- NI:** housing: stainless steel 1.4305
ball: stainless steel, hardened
spring: stainless steel

Zur Arretierung sowie als An- und Abdruckstifte.
Temperatureinsatzbereich: max. 250 °C.
Standard-Federkraft
To be used for locating or for applying pressure or lifting off.
Temperature range up to 250 °C
Standard spring load

mm



d ₁ ∅	d ∅ Kugel Ball	d ₂ ∅	l ₁	l ₂	l ₃	w	Druck [N] ≈* / Pressure		kg
							Anfang / Start F ₁	Ende / End F ₂	
M04	2,5	6	9,5	6,5	5,0	0,8	8,0	14,0	0,001
M05	3,0	8	12,5	8,5	6,7	0,9	8,0	14,0	0,002
M06	3,5	10	14,0	9,0	-	1,0	11,0	18,0	0,004
M08	4,5	13	16,5	11,0	-	1,5	18,0	31,0	0,007
M10	6,0	16	20,0	14,0	-	2,0	24,0	45,0	0,013
M12	8,0	18	22,0	15,0	-	2,5	26,0	49,0	0,020

* = statistischer Mittelwert / statistical average value